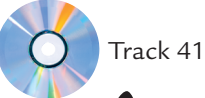


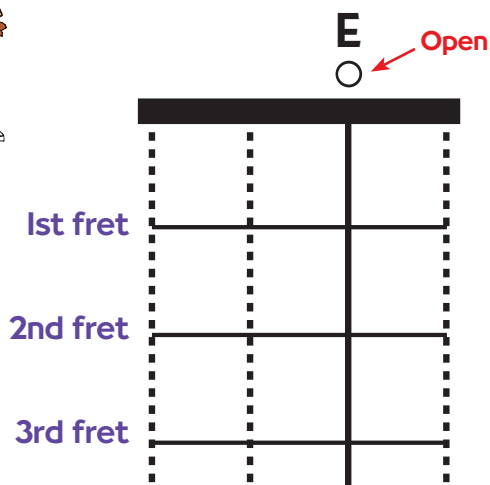
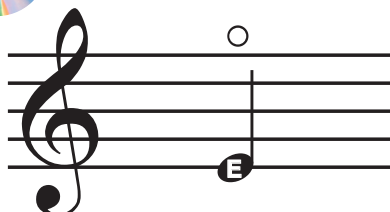
# Notes on the Second String

## Introducing E

Hear  
this note!



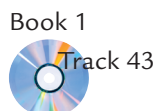
A note on the lowest line of the staff is called E. Play the 2nd string open.



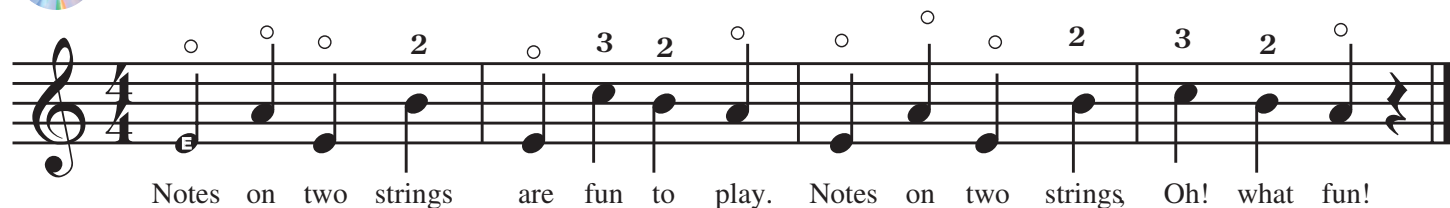
### E Warm-up



## Two Open Strings



## Two-String Melody



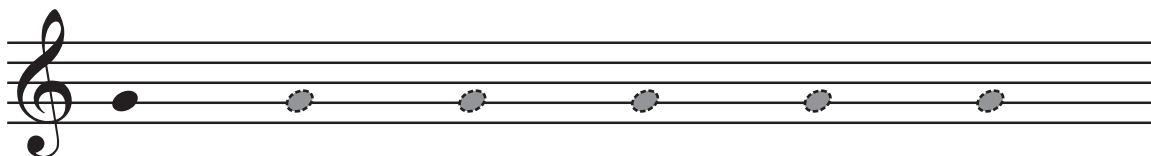
## ACTIVITY: The Note G (2nd String)



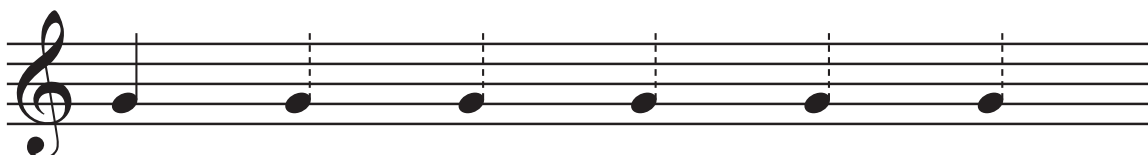
The note on the second line of the staff is called G.

### Drawing the Note G

**Step 1:** Draw an oval notehead on the second line of the staff.



**Step 2:** For the stem, draw a line from the right of the notehead to just above the top line of the staff. The stem always goes up for this note.

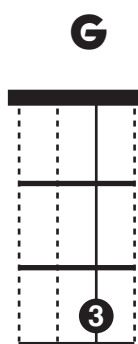


Now, draw the note G six times below.

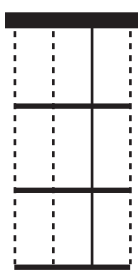
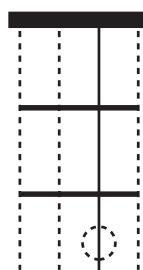


### Playing the Note G

To play the note G, press the 3rd fret of the 2nd string.



Indicate the fingering for note G by placing the number “3” in a circle on the 3rd fret of the 2nd string on each diagram.



# Introducing B-flat



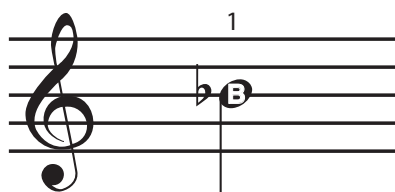
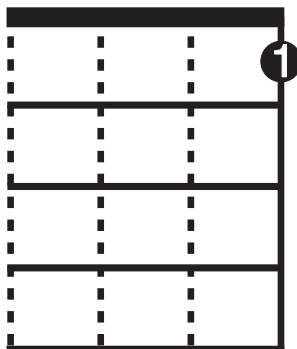
Hear  
this note!



Book 2  
Track 11

A *flat*  $\flat$  lowers a note a *half step* (the distance from one fret to another is called a half step).  $B\flat$  is played one fret lower than the note B. When a flat note appears in a measure, it is still flat until the end of that measure.

1st FRET



## Aura Lee

Book 2



Track 12

Elvis Presley recorded this folk song as a pop ballad called "Love Me Tender."

