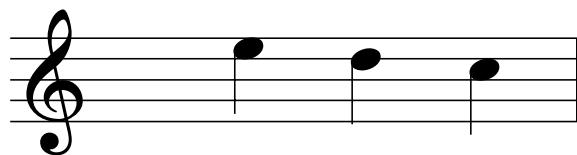
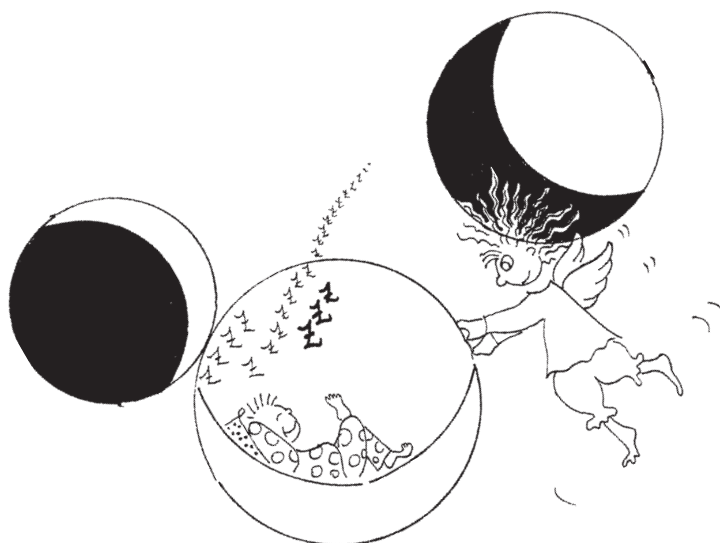


Lezione 25

COMPLETA E SUONA



nota	.....	.....	.....
corda	.....	.....	.....
tasto	.....	.....	.....
dito m.s.	.....	.....	.....

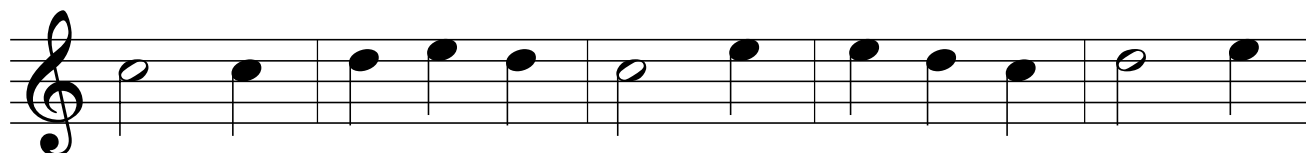


# Ninna nanna

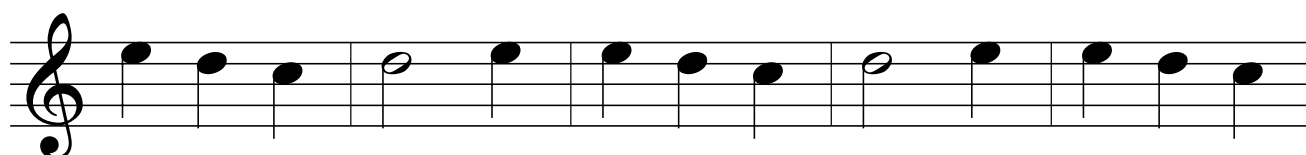
Melodia popolare francese



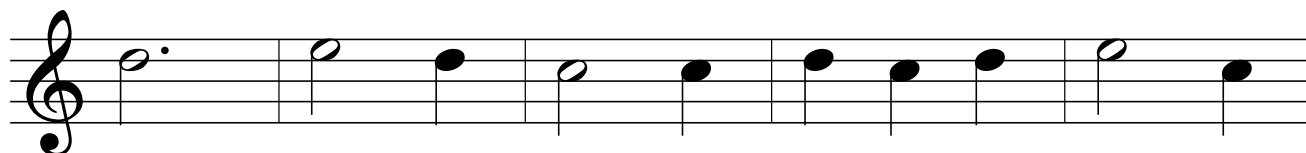
Dor-mi o bim - bo nel tuo let - ti - no, dor-mi e



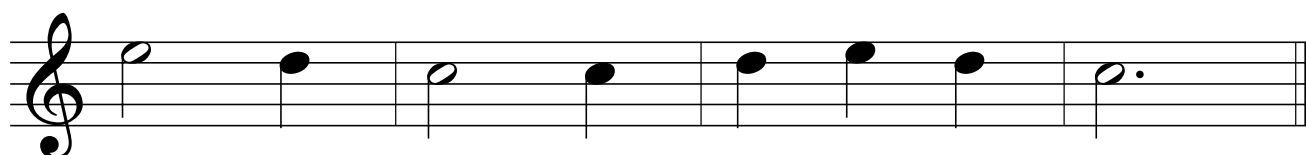
so - gna un an - ge - lo d'or: è sce - so dal ciel un



an - ge - lo d'or, con te re - ste - rà e ti a - iu - te -



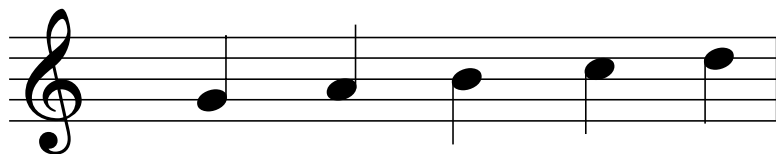
rà. Dor - mi o bim - bo nel tuo let - ti - no,



dor - mi e so - gna un an - ge - lo d'or.

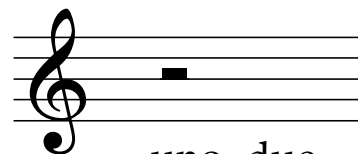
## Lezione 26

## COMPLETA E SUONA



nota	.....	.....	.....	.....	.....
corda	.....	.....	.....	.....	.....
tasto	.....	.....	.....	.....	.....
dito m.s.	.....	.....	.....	.....	.....

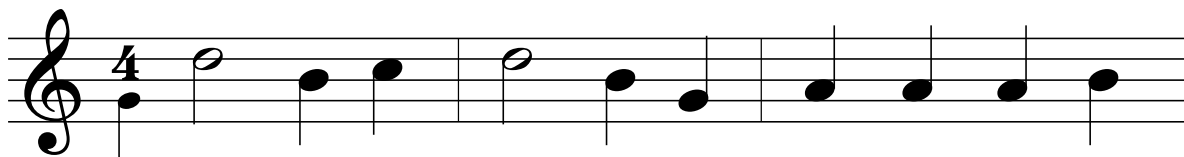
Pausa di minima  
= 2 tempi (2/4)  
di silenzio



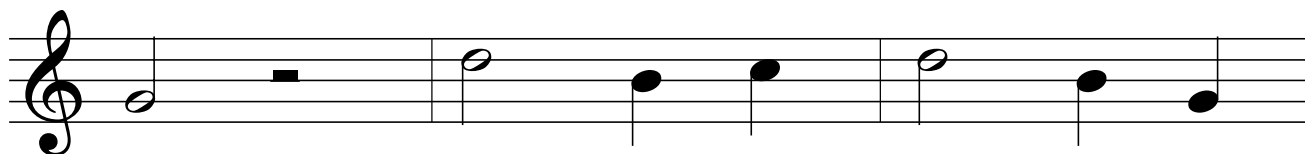
uno, due

## Hänsel e Gretel

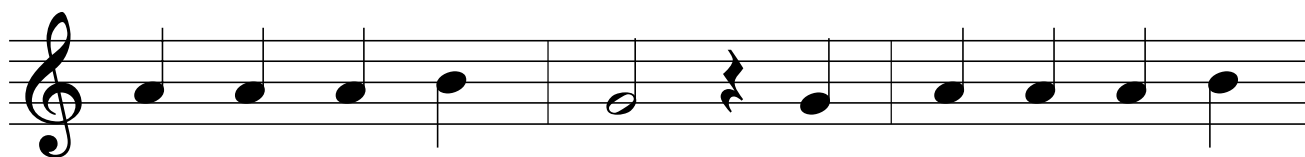
Canzone popolare  
tedesca



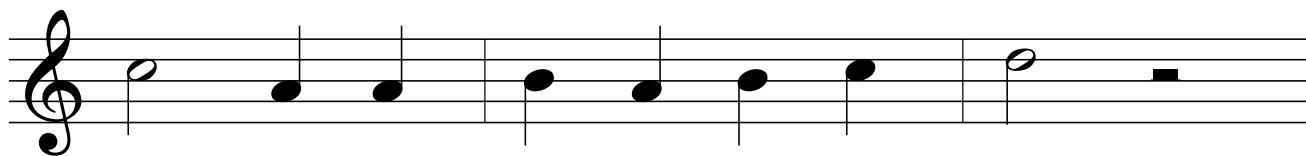
Hän - sel e Gre - tel si son per - si per -  
E men - tre man - gian bi - scot - ti a vo - lon -  
Den - tro al for - no la fiamma è al - ta co -



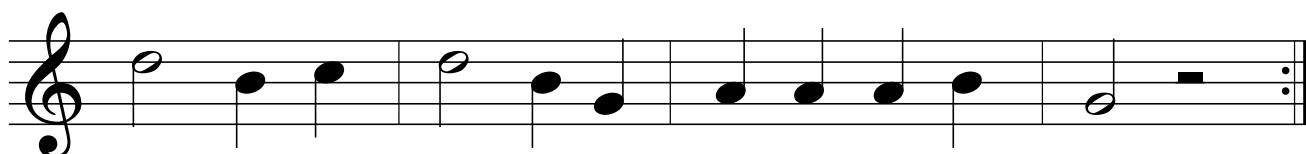
ché (uno, due) il bo - sco è ne - ro e  
tà e - sce u - na stre - ga: «Ma  
sì. La stre - ga a - pre e



tan - to grande ahi - mè. Ma c'è u - na ca - set -  
che ci fa - te qua?». La stre - ga a - des - so  
guar - da pro - prio lì; ma Gre - tel la sos -



ti - na di pan - na e bi - gné,  
 pen - sa che li po - trà man - giar:  
 pin - ge, la stre - ga ca - de giù:



quei bim-bi pen - sa-no: «Chivia - bi - te - rà?»  
 po - ve - ri bim - bi co - me po-transcap - par?  
 o - ra che è cot - ta pa - u - ra non fa più.

